

# **New England Telehealth Consortium**

**(Success, Challenges, Future)**

**Presented by Jim Rogers,  
ProInfoNet and  
Health Connect Networks**



---

## Why NETC?

- ☐ To realize the vision of the FCC
- ☐ To connect all healthcare sites in NNE with a private, high bandwidth, quality of service network
- ☐ To connect NETC healthcare sites with Internet and Internet 2

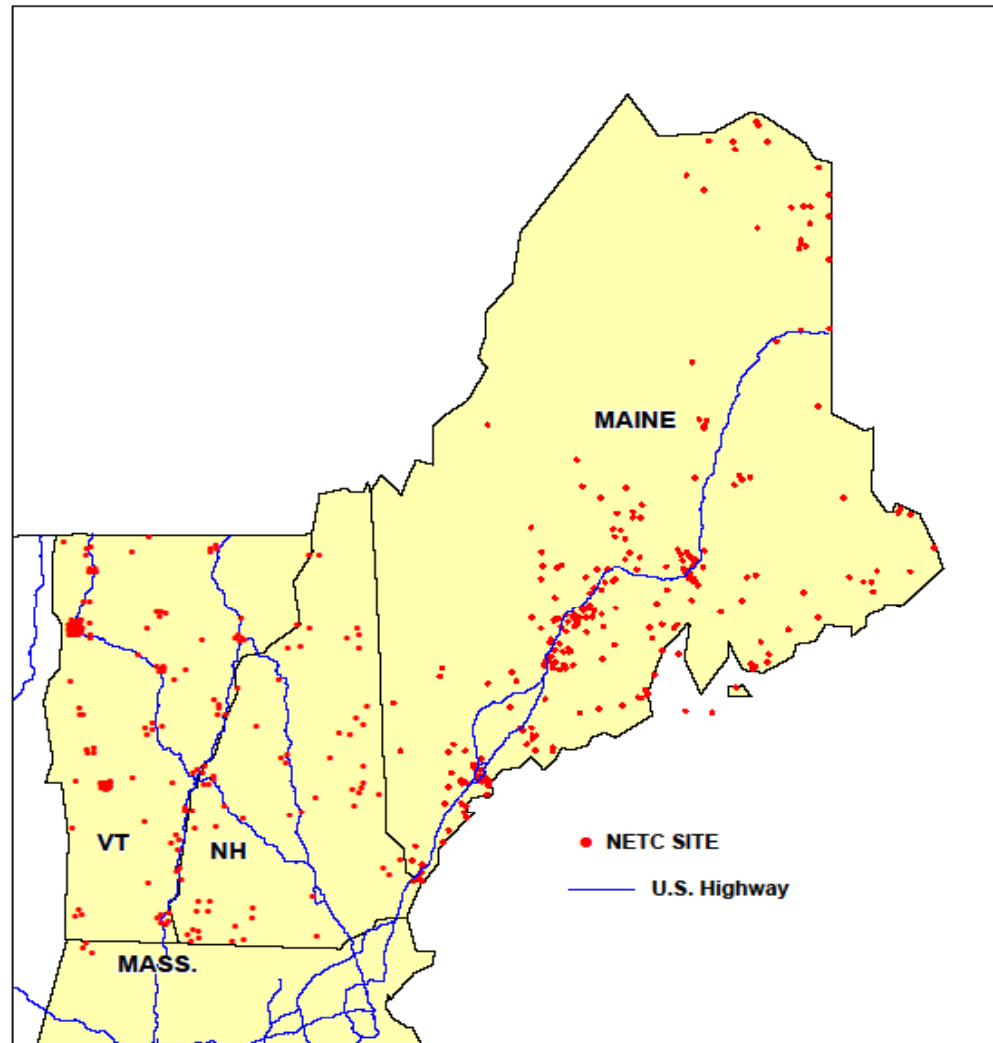


---

## What is NETC?

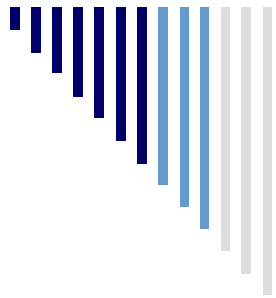
- ❑ FCC/RHCPP award winner
- ❑ \$24.6 million award
- ❑ Largest award and project in the U.S.
- ❑ Non-profit, tax-exempt healthcare consortium with over 400 sites in Maine, New Hampshire, and Vermont
- ❑ Hospitals, Clinics, and Behavioral Health

## NEW ENGLAND TELEHEALTH CONSORTIUM SITES



Prepared by EMHS Planning Dept. 04/23/2010

NETC Sites 2010.wor



## What is the NETC Network?

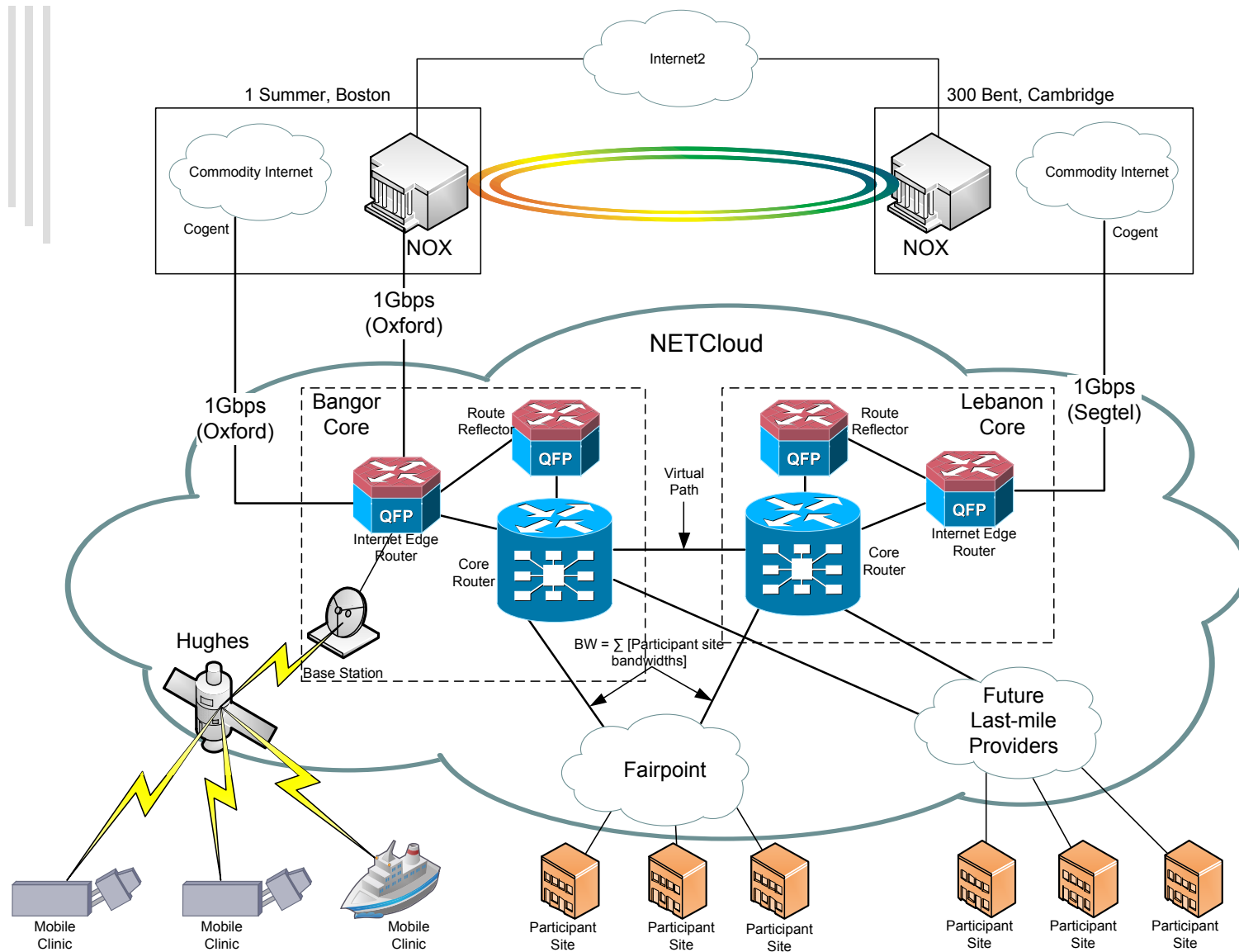
- ☐ Designed by ProInfoNet
- ☐ Private Network
- ☐ Supports all Healthcare Applications
- ☐ Guaranteed Bandwidth
- ☐ Symmetrical Bandwidth
- ☐ Quality of Service
- ☐ For applications that need prioritization, low latency and low packet loss

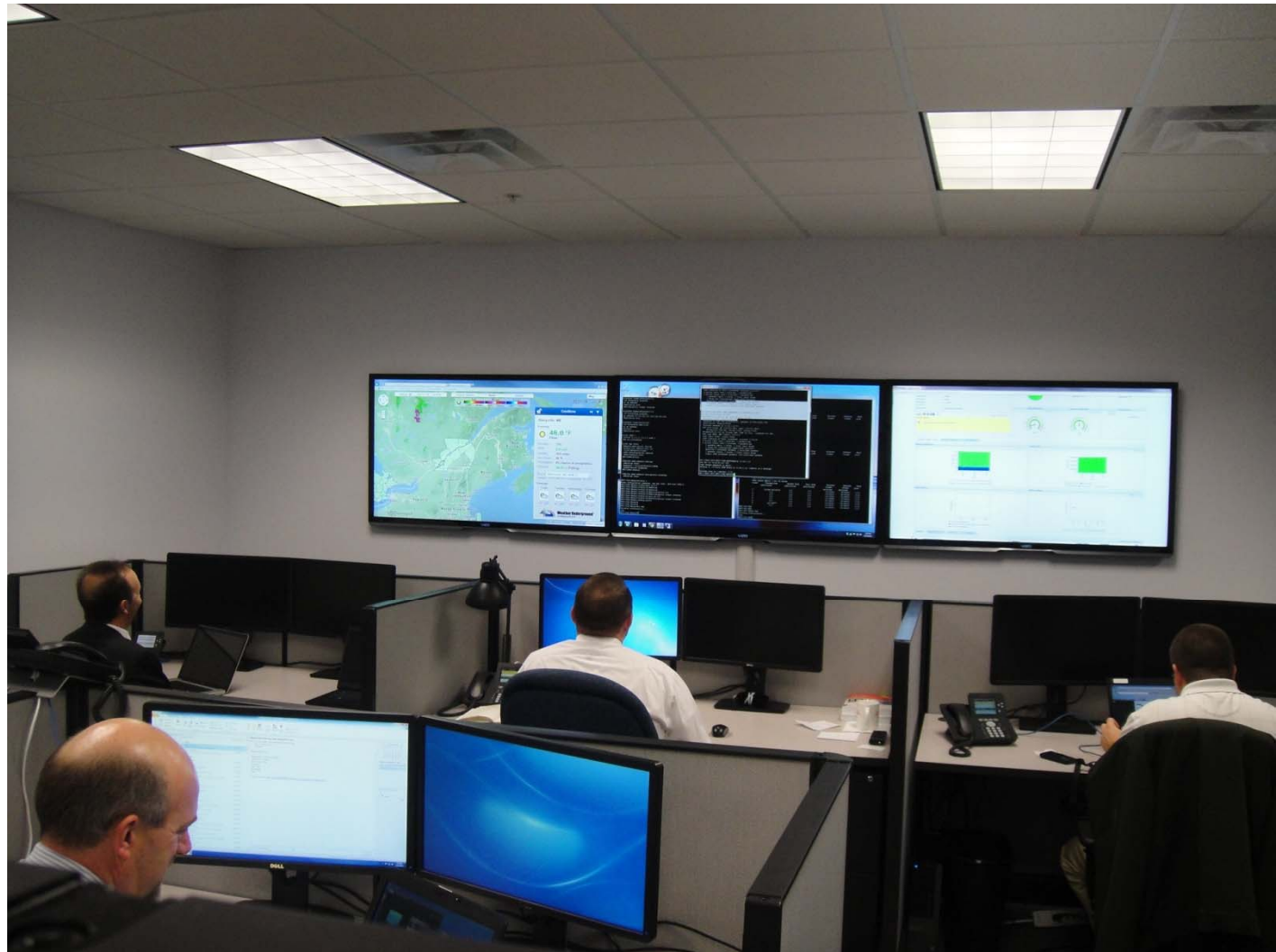
---



## What the NETC Network Offers

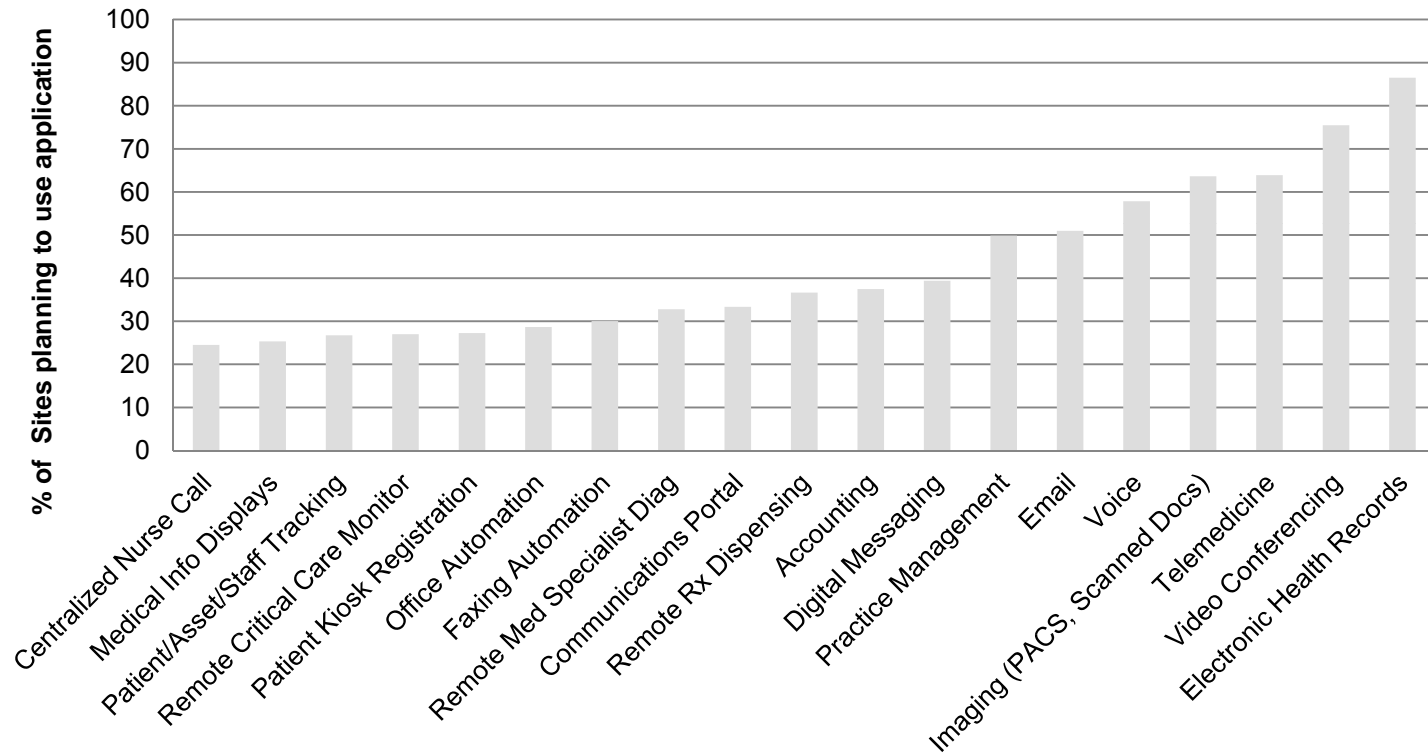
- ☐ Eligible sites pay 15% of network costs
- ☐ Broadband 1.5 Mbps to 1 Gbps
- ☐ Quality of Service private network
- ☐ Commodity Internet and Internet2
- ☐ Support for IPv4 and IPv6
- ☐ Ethernet topology with Ethernet handoffs
- ☐ BGP peering services
- ☐ Redundant network core sites
- ☐ 24x7 NOC for management and support



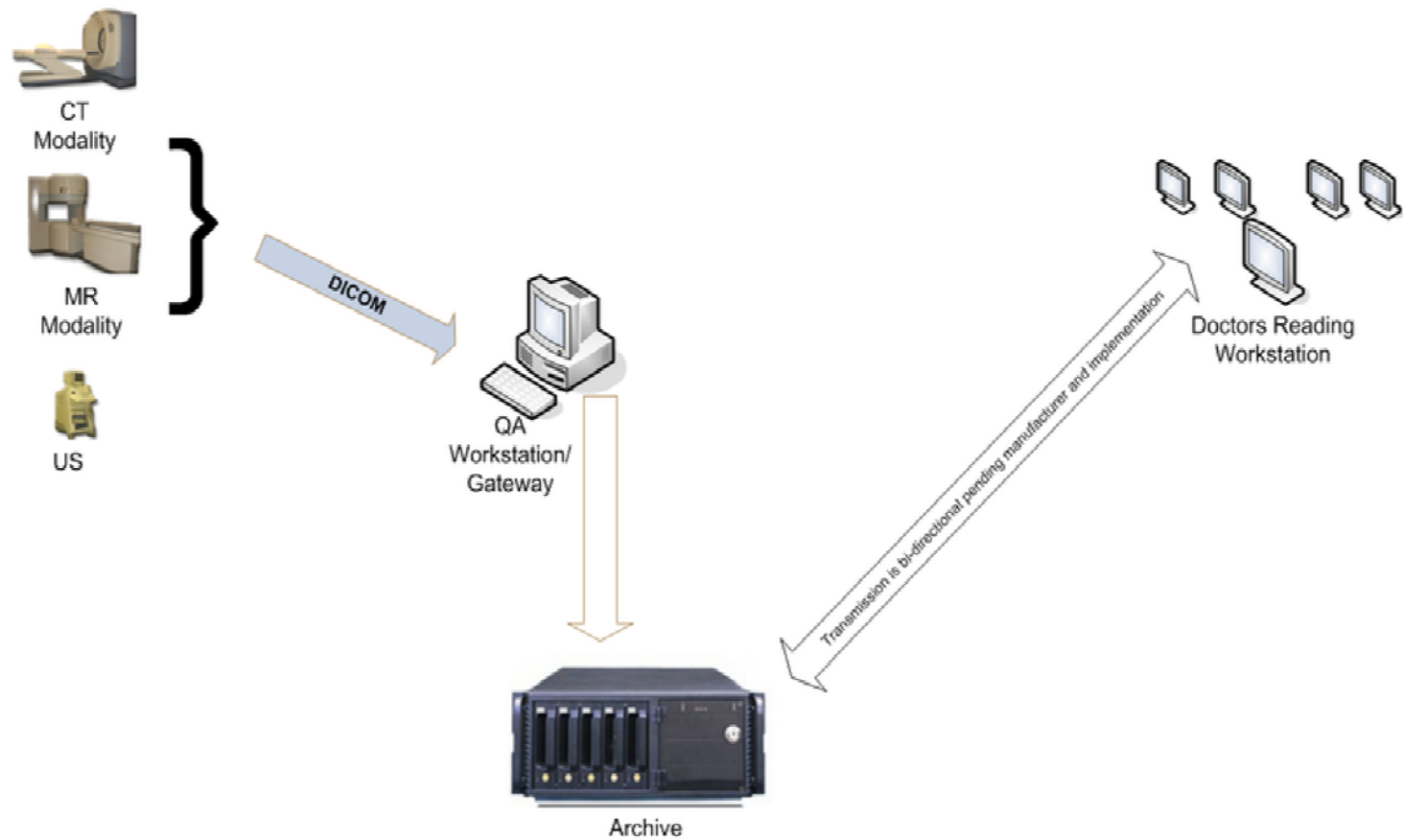


# NETC Applications

## NETC Participant Expected Application Usage



# Picture Archiving and Communication System



# Electronic Health Records

- EHRs may include a range of data, including demographics, medical history, medication and allergies, immunization status, laboratory test results, radiology images, vital signs, personal stats like age and weight, and billing information.

Handy patients enterprise edition

File Edit View Help

David (8 month and 10 day)  
John (2 years and 2 month)

Mother: Teacher  
Father: Financial advisor  
Parent: Married

Last: Anderson P  
First: David Boy  
Birth: 5 January 2009  
Age: 8 month and 10 days Patient nbi: 3

Appointments

Forms

Meeting (Doctor)  
Referrals (Doctor)  
Assistant  
Billing  
Reports  
Statistics

SOAP Sum T  
R-V T, F, PC  
Admission Agenda

Sheets

O: Neurologic  
O: Vascular  
O: Cardiac  
O: Respiratory  
O: Abdomen  
Exams  
Radiology  
Summary  
Patient documents  
Letter

Meetings

2 month checkup 5 Mar 09 2m.0d  
1 month checkup 5 Feb 09 1m.0d  
Respiration problem 22 Jan 09 17d  
10 days checkup 13 Jan 09 8d  
Control for return at home 9 Jan 09 4d  
Birth 5 Jan 09 0d

Diagnosis

General  
My Diagnosis  
Social

New documents

- Abdomen palpat - 15 Sep 2009  
- Cardiac auscul - 15 Sep 2009

To do

Send checkup

Notes

Father ask many questions, add 10 minutes to consultation

Current doctor Dr Herman

Menu 1 Menu 2 Menu 3 Search

Digestive

Thursday, 22 Jan 2009

Digestive inspection

Normal

Digestive auscultation

Normal abdomen noises

Digestive palpation

Little pain on the right lower area

Liver

No hepatomegaly.

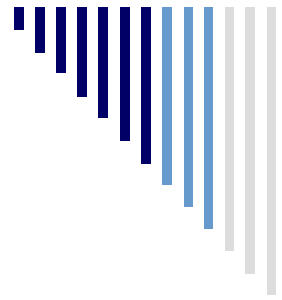
Rectal

Normal

Documents manager

Page 1/1  
Draw  
Mark  
Color  
Pen  
Eraser

Previous page Next page



# Telemedicine



---



## Tele-ICU / Critical Care Monitoring



# Remote Dispensing



---



# Challenges to Health Care USF

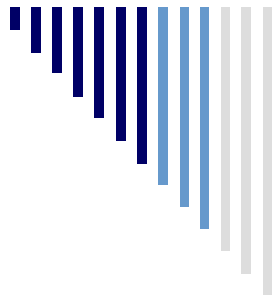
- ☐ Forming a Consortium
  - ☐ Getting competitors to join consortium
  - ☐ Fair share contribution by ineligible sites
  - ☐ Administrative sites not funded (RHCPP)
- ☐ Funding Administrative Costs
- ☐ Complex rules
- ☐ Complex process

---



## Benefits of Health Care USF

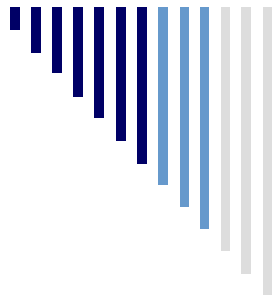
- ❑ The benefits are HUGE
- ❑ Saving 50% to 85% of network costs
- ❑ NETC HCPs will save \$170 Million
- ❑ High bandwidth Private QoS networks
- ❑ Commodity Internet, Internet2 and NLR
- ❑ Share data within a system or competitively
- ❑ Advancing Healthcare apps that need QoS



---

## Looking Ahead

- ❑ Healthcare Connect Fund (NETC helped shape)
- ❑ 65% subsidy for network services and equipment
- ❑ Subsidy for rural and urban HCPs in consortium
- ❑ Administrative sites and data centers eligible
- ❑ HCPs can add sites and increase bandwidth
- ❑ Exciting times for Healthcare Networks



## Thank You!

- Jim Rogers
  - Managing Agent, NETC
  - President, ProInfoNet
  - President, Health Connect Networks
- 207-947-3636
- [jrogers@healthconnectnetworks.com](mailto:jrogers@healthconnectnetworks.com)